

ACTIVE X PLUG-IN, PIXEL POWER CONTROL CENTRE AND RUNDOWN MANAGER

ActiveX Plug-in

Compatible with the leading newsroom automation systems, the Pixel Power Active-X plug-in is a lightweight front-end to the graphics database hosted on the Pixel Power Control Centre server. The ActiveX plug-in provides tight, visual integration of the graphics content of a newscast within the newsrooms desktop working environment.

Complete CG Templates

Visual Confirmation of your CG pages

The Pixel Power ActiveX plug-in allows newsroom staff to search for and fill out predefined Clarity templates. When a template is selected a small form is presented allowing the user to fill in the fields. As each field is entered the plug-in presents an updated thumbnail preview. Clicking on the thumbnail displays a full resolution preview of the completed graphic. Dragging the preview to the story places the completed template into the story.

Search for Still Graphics

Immediate access to your entire library

The plug-in also provides tools for quickly searching through the library of graphics available for air. Both text and thumbnail views of the still library are presented.

Staff may search for stills by keyword, number and network location. By simply dragging the still to the story they can add the still to their rundown.

Beyond the thumbnail preview the user can also view a full resolution preview at their desk. This allows the user to be certain that they have selected the correct still, even with very detailed imagery.

Below: Pixel Power ActiveX control shown within ENPS newsroom client



Request New Stills

Quick, paperless still graphic requests

A new still request function within the plug-in provides a simple, uniform method of requesting new stills from the Art Department. At the point of request, each still is reserved an ID number which allows the producer to complete the graphics cues in the story even before the new images are created.

Left: Pixel Power ActiveX control shown within ENPS and Avid iNEWS newsroom client

pixel power pixel power pixel power pixel power pixel power pixel power pixel power pixel power pixel power pixel power pixel power pixel power pixel power pixel power

Pixel Power Control Centre

The Pixel Power Control Centre (PPCC) is a hardware and software approach to integrating the Clarity family of graphics systems into a modern, automated news production environment. The system is available in two versions, providing either a low-cost, automation independent toolset, or tight front-end integration with major newsroom automation systems.

PPCC - Newsroom Version

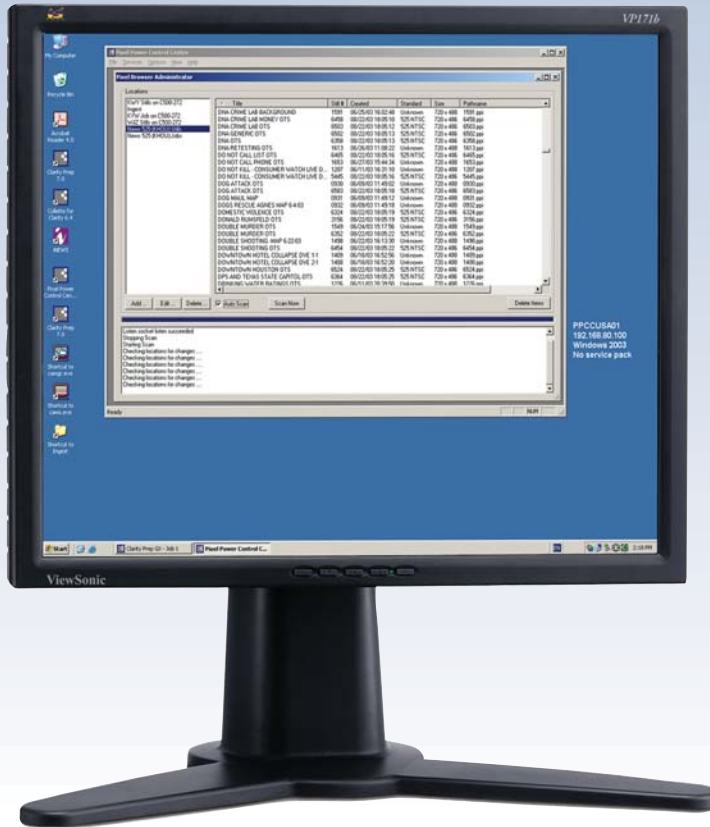
Integration with Major Newsroom Systems

Hosted on a powerful, dual processor server platform running Windows Server OS the Newsroom version of the Pixel Power Control Centre provides core support for the integration of Pixel Power graphics systems with MOS enabled newsroom systems.

Dual Xeon processors provide the performance required to build dynamic previews for ActiveX plug-ins deployed in a busy newsroom. Windows Server OS provides robust networking to service both newsroom and asset migration processes. Redundant power supplies and mirrored disk storage ensure the reliability and fault tolerance necessary in a mission critical broadcast system.

The system's MOS gateway supports close integration of one or multiple Clarity systems with an MOS based newsroom, including the use of the Pixel Power ActiveX plug-in for newsroom desktops.

The system also provides supporting services for the Pixel Power ActiveX plug-in for AVID iNews ControlAir. In this iNews installation layout automation may also be implemented via the Pixel Power Device Manager for AVID iNews ControlAir, providing an end-to-end newsroom graphics solution.



Above: Pixel Power Control Centre, Browser Administrator module user interface.

The Pixel Power ActiveX plug-in is sold separately in single seat or ten seat license packs.

pixel power pixel power pixel power pixel power pixel power pixel power pixel power pixel power pixel power pixel power pixel power pixel power pixel power pixel power

Automated Still and Clip Graphics Ingest

Publish New Graphics Effortlessly

The Browser Administrator module establishes "watched folders" intended to receive new graphic elements. When a new element is detected the program acts to add it to the server database and publish it to the Clarity systems. File format conversion, numbering and clearing against a database of outstanding graphic requests is handled automatically. The system supports many common file types and networking schemes permitting the easy integration of multiple platforms. All of this frees the creative staff from dealing with technical matters, allowing them to concentrate on creative activities.

Automated Image Extraction

A Bridge Into Legacy Quantel Systems

The Pixel Power Control Centre also provides tools to integrate legacy Quantel systems into a modern graphics workflow. Express series

Paintbox, Picturebox, Editbox and Hal systems may be accessed via a custom FTP method. New pictures and cutouts saved on the Quantel systems shared drive are quickly and automatically copied to the server based mirror for access by other systems, including publishing to the on-air Clarity systems. This allows existing Quantel systems to remain an integral part of a modern graphics workflow involving systems from multiple vendors.

Automated Asset Synchronization

Any Graphic, On Any Channel, At Any Time

In addition, the Pixel Power Control Centre provides tools to ensure the constant synchronization of various graphic storage locations. This ensures that elements loaded to any one Clarity system are also populated to other systems throughout the facility. The result is flexibility within the newscast supporting the simple redirection of any graphic event to any Clarity channel, meeting the demands of the moment.

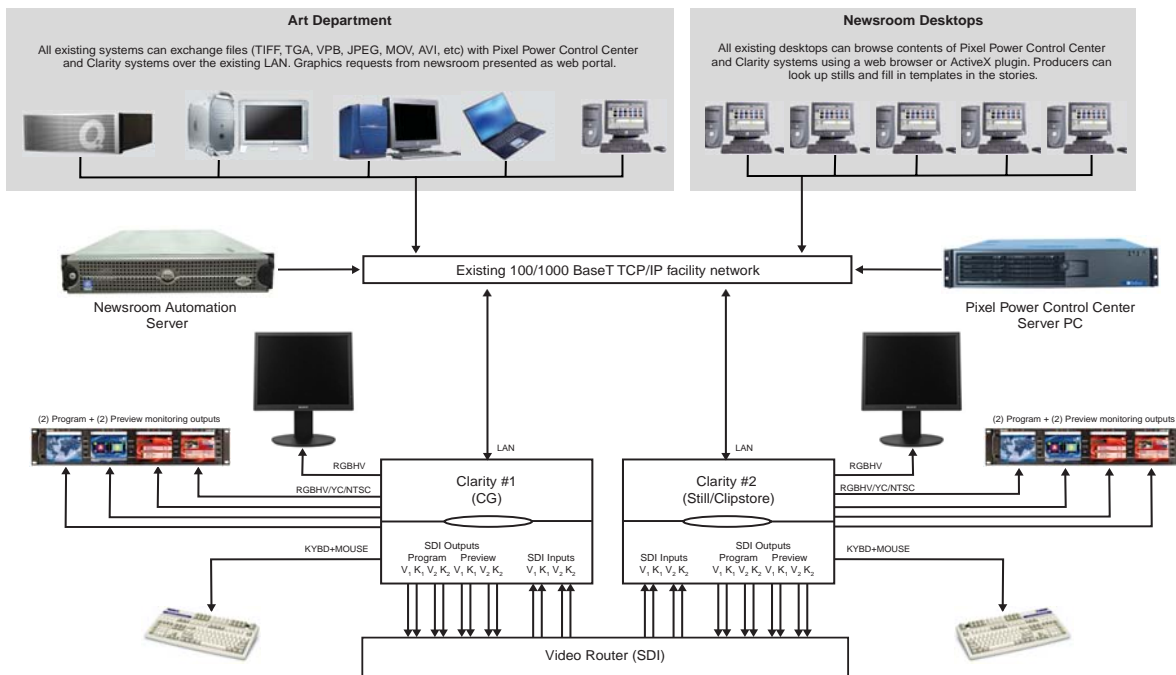
PPCC: Browser Version

Low Cost Graphic Asset Management

Hosted on Windows XP Professional using Microsoft Internet Information Services (IIS) the Pixel Power Control Centre: Browser version shares its database of graphic assets as an intranet portal, completely independent of the newsroom automation system.

Using a web browser staff can easily and conveniently search the library of available still images and CG pages. Search parameters include: keyword, title, number, date and physical location. Search results are displayed as a set of thumbnail images, simple or detailed text descriptions with user defined sort order.

Relying upon only a common web browser as the client application there is no per seat license fee, simplifying the provision of high performance search tools throughout an entire facility at low cost.



Left: A Typical Pixel Power Newsroom Installation Addressing CG and Still/Clipstore Tasks

pixel power pixel power pixel power pixel power pixel power pixel power pixel power pixel power pixel power pixel power pixel power pixel power pixel power pixel power

Rundown Manager

Manual playout control of multiple Clarity channels live-to-air

The Pixel Power Rundown Manager client integrates with the Pixel Power Control Centre to provide manual playout control of multiple Clarity channels live-to-air. Running order modifications and Clarity channel status changes (for example, the availability of graphics assets) are instantly reflected in the Rundown Manager playlist display.

The Pixel Power Rundown Manager software provides a method of controlling MOS rundown playout on one or more designated Clarity systems.

The Pixel Power Control Centre (PPCC) implements a MOS gateway for seamless graphics workflow integration between newsroom systems and Clarity graphics devices. It maintains MOS rundowns and manages and builds the back-end graphic asset database used by the Pixel Power ActiveX control plug-

in and Pixel Browser ASP Client software.

The Pixel Power Rundown Manager client integrates with the PPCC to provide manual playout control of multiple Clarity channels on one or more physical Clarity systems. Running order modifications and event changes (such as availability of graphics assets or assigned channel changes) are instantly reflected in the Rundown Managers' playlist display.

Below: Active Rundown List

Rd	#	Slug	Event	Status	Channel	Page	Field Data
Rundown: Studio 1 (MOS Ready To Air)							
Headlines							
	2	Stuart Clow Paul Witcomb	Cued	1	1000	01: Stuart 02: Clow 03: Paul 04: Witcomb	
		CG (Cue : cloc - Cambridge)	Available	1	1001	01: Cambridge	
		CG (Cue : cloc - London)	Available	1	1050	01: London	
		CG (Cue : cname -) (cene)	Available	1	1051	01: Ian Hannah 02: at the Scene	
Story : Prime Ministers Question Time							
		CG (Cue : cname - Tony Blair Labour Party Leader)	Available	1	1100	01: Tony Blair 02: Labour Party Leader	
		CG (Cue : cname - David Cameron Conservative Leader)	Available	1	1101	01: David Cameron 02: Conservative Leader	
		CG (Cue : cname - Sir Tim Redmond Labour Back Bencher)	Available	1	1102	01: Sir Tim Redmond 02: Labour Back Bencher	
		CG (Cue : liveon - LIVE)	Available	1	1103	01: LIVE	
		CG (Cue : CG (Still 1062: IMG0062) -)	Available	1	1104	01: WStuart-pundit\Stills\Porsche2000\1062.ppi	
Story : Late beaking story							
		CG (Cue : CG (Still 1000:) -)	Error	1	1150	01: 1000	

Right: The optional Rundown Manager keypad enables quick and easy control of rundowns via a dedicated system



Newsroom automation systems supported by Pixel Power
 Newsroom solutions